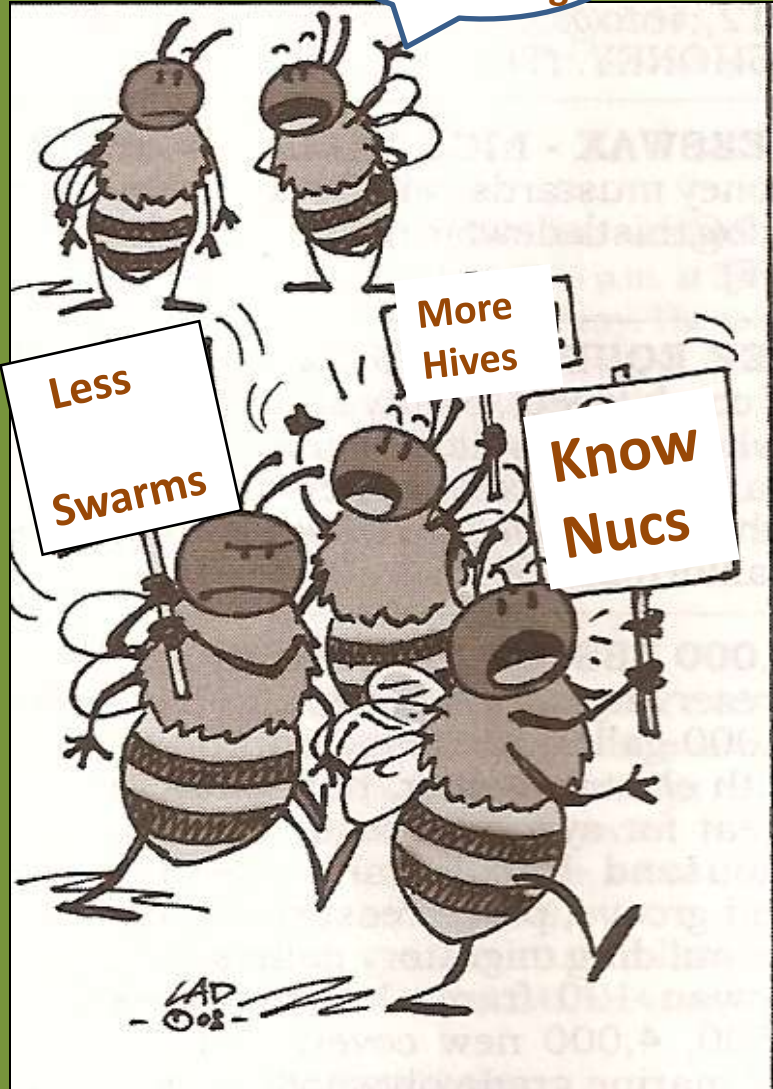


Hey, this
could be
better than
swarming



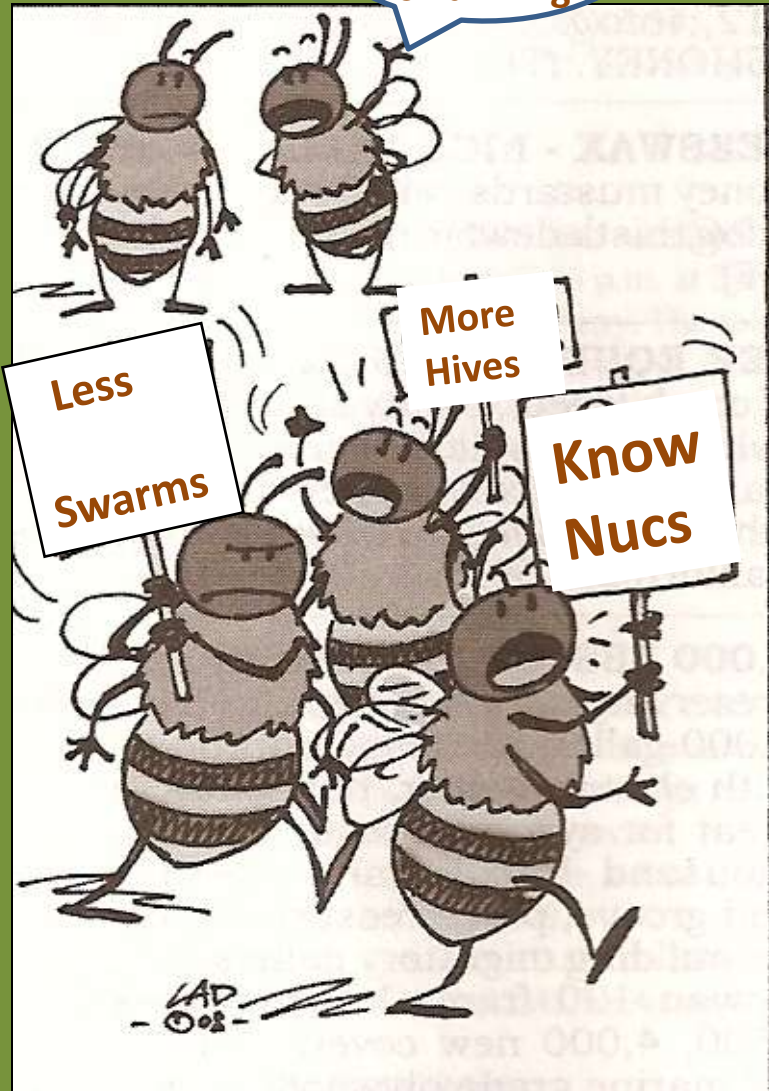
Know Nucs

Presented for LCBA
5/21/15
Morris Ostrofsky

Hey, this
could be
better than
swarming

Know Nucs

- Why make nucs?
- When is the best time to make a nuc?
- What preparation is needed?
- How is a nuc made?
- What about care and feeding?
- Success?



Nuc aka

- Nucleus
- Division
- Split



Swarm Control

Removing
capped
brood



Removing
lots of
young
bees

Increase Hive Numbers



Raise Queens from Cells/Eggs



Strengthen Weak Colonies



Save Money
Packages = \$



Sure Fire Re-queening



Source of Early Season Queens



Eliminate Laying Workers



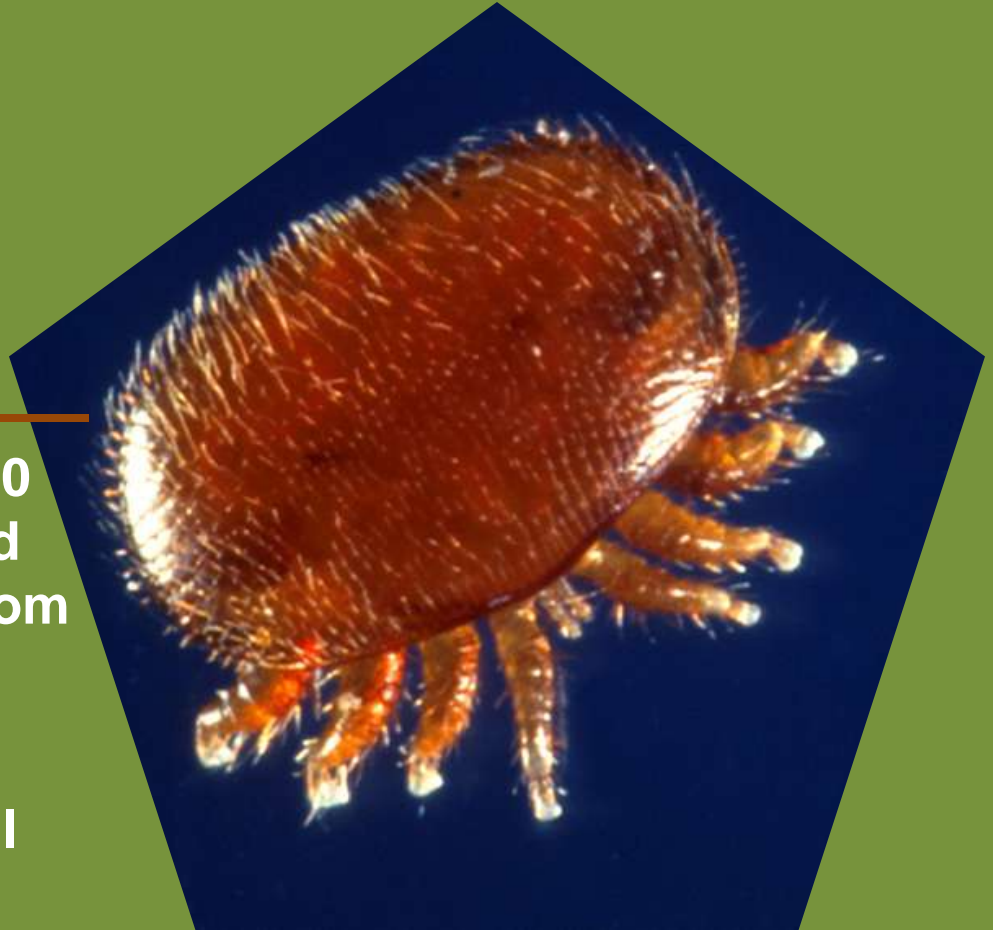
Set Back Varroa Cycle



Window of
opportunity

← Approximately 10
days after mated
queen released from
cage

Or 18 days for
virgin queen/cell



Today's focus:

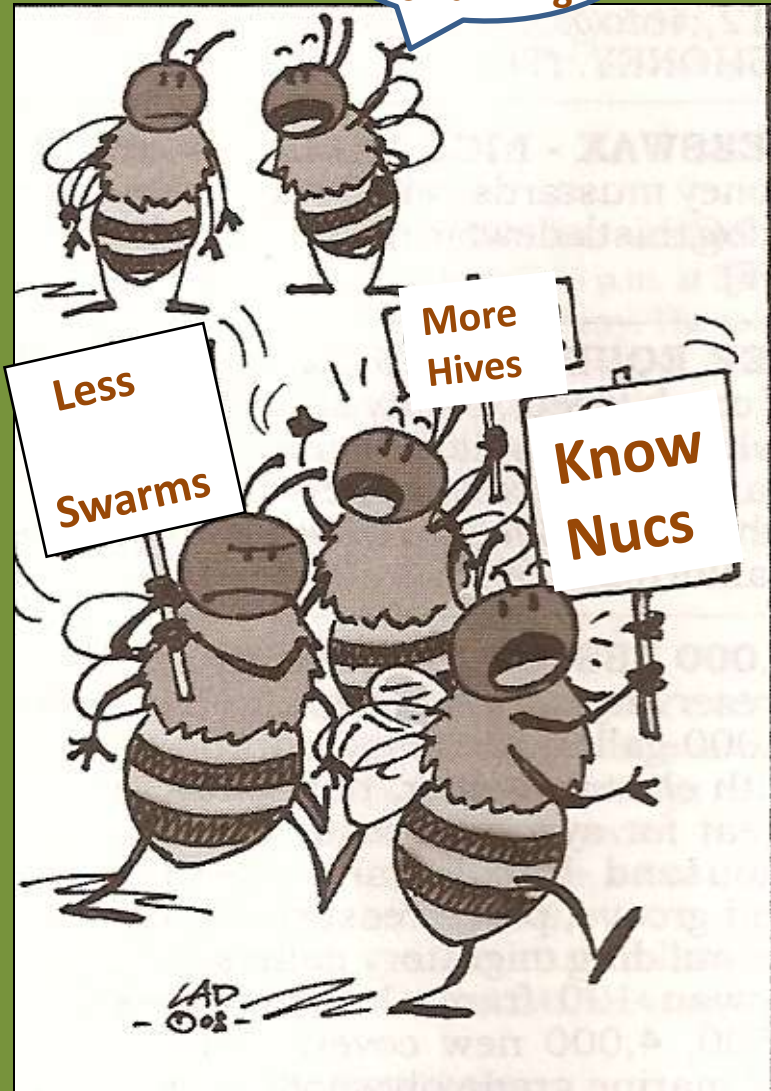
How to make a nuc



Hey, this
could be
better than
swarming

Know Nucs

- Why make nucs?
- When is the best time to make a nuc?
- What preparation is needed?
- How is a nuc made?
- What about care and feeding?
- Success?



When to Make Nucs?

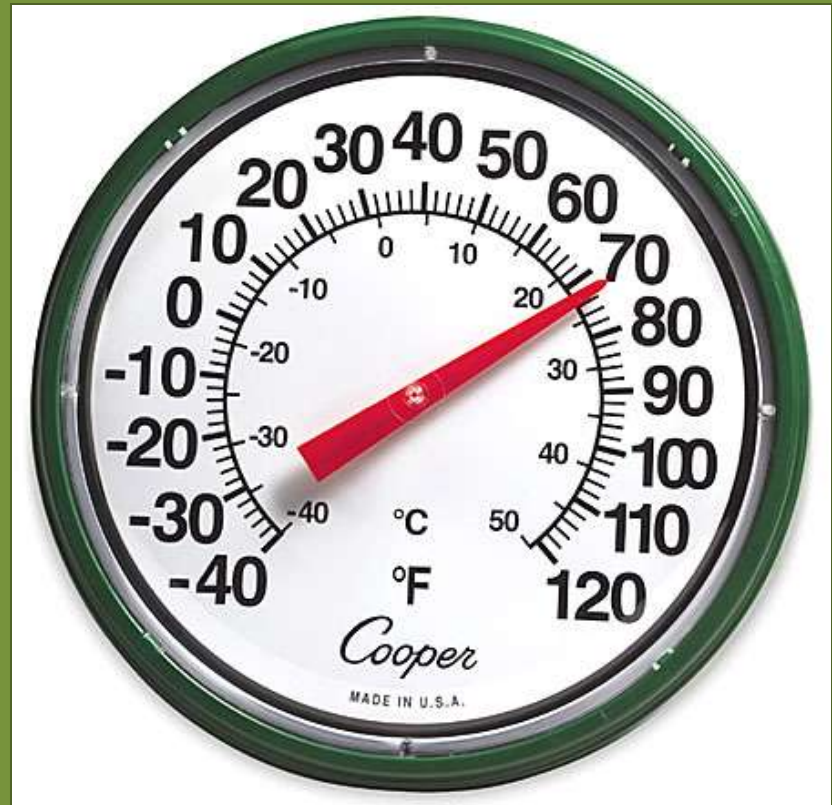
Queen availability sets the pace

January	February	March
April	May	June
July	August	September
October	November	December

Queens
available for
current
season

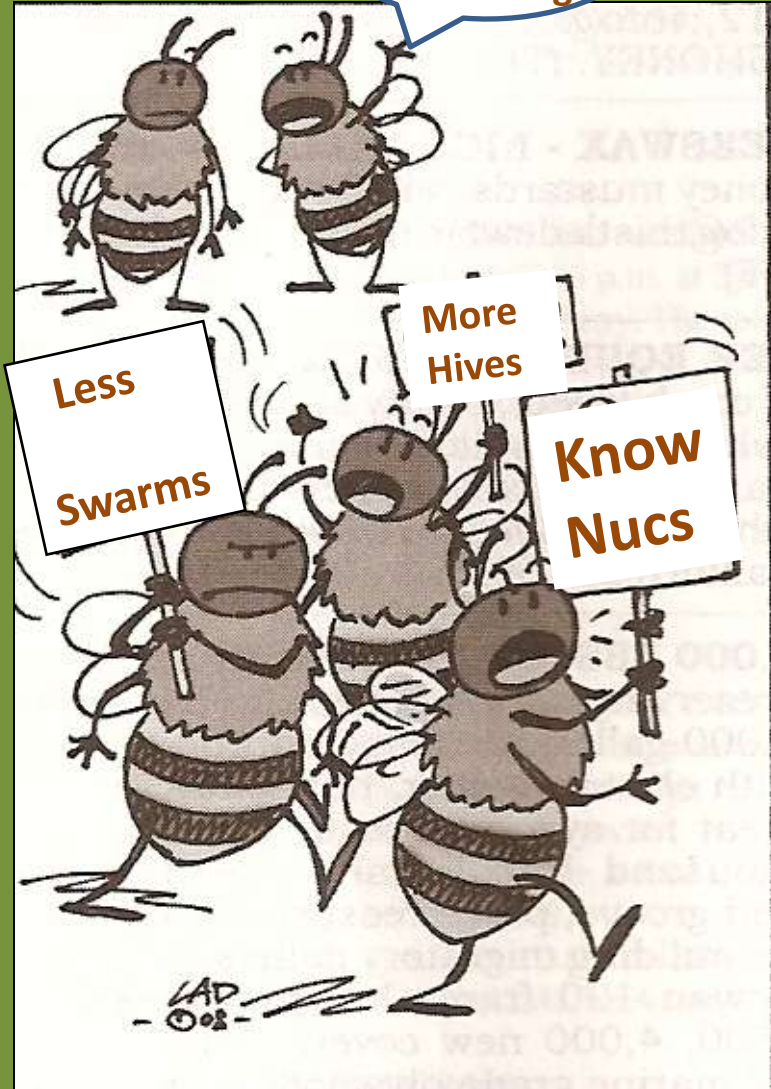
July: Late
Season
queens for
overwintering

Ideal conditions for making divisions



Hey, this
could be
better than
swarming

Know Nucs

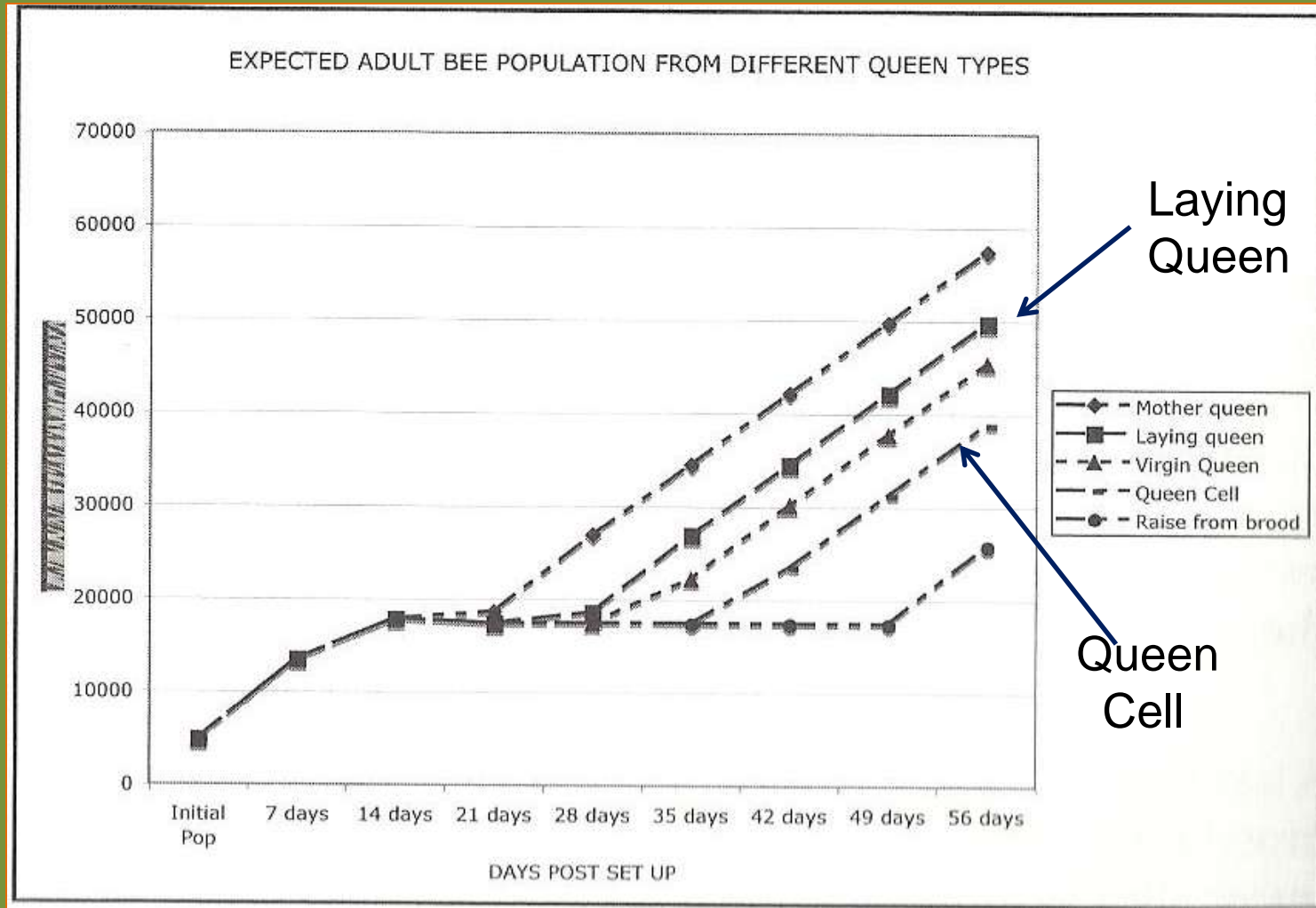


- Why make nucs?
- When is the best time to make a nuc?
- What preparation is needed?
- How is a nuc made?
- What about care and feeding?
- Success?

Preparing to Make Nucs

- Decide on a queen source
- Make a calendar based on queen delivery date
- Select a donor hive
- Gather your materials
- Decide to either leave nuc in same yard or move to another location > 3 miles away

Preparation: get a queen



All dates are flexible EXCEPT for day 5

Create Calendar/Mated Queens

Make division; add caged queen	0						If NO queen 5 cells or eggs, uncover candy	
Feed continuously for first 2 weeks								
		Re-check for queen cells if needed	8					
Feed continuously for first 2 weeks								
				If new brood, transfer to standard box	24			

Preparation: Select a Donor Hive



Which one would you divide?

Preparation: Gather your materials

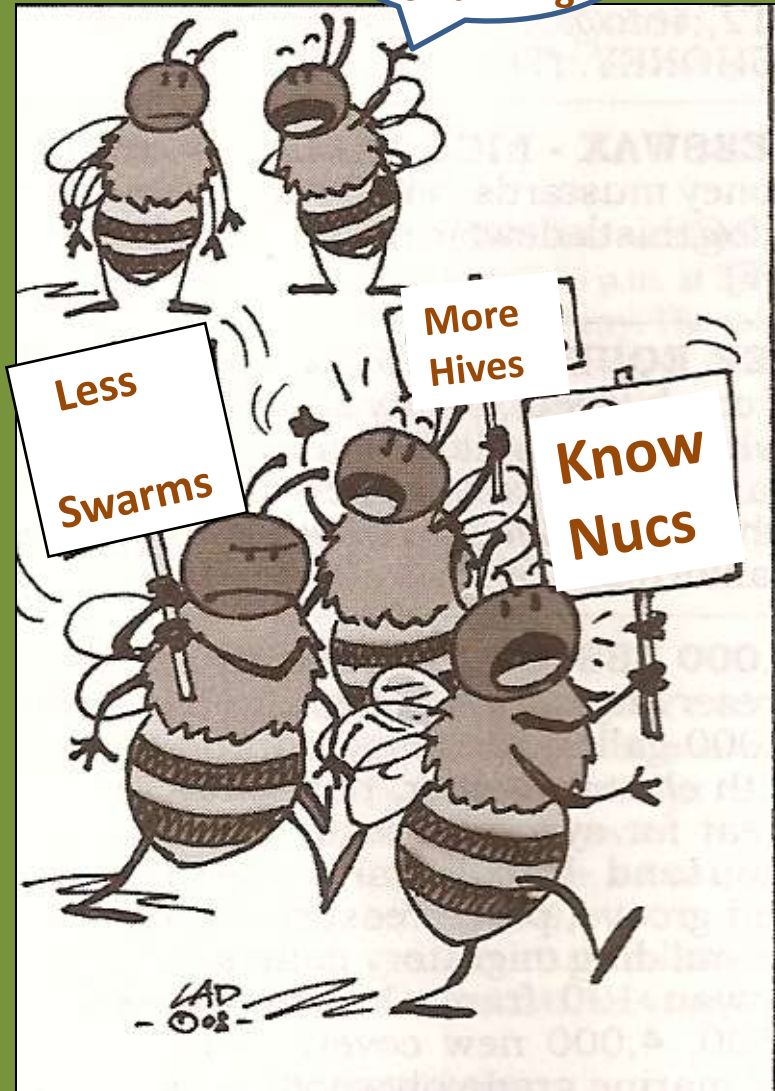


1. Two empty 5 frames nuc boxes
2. Shim
3. Syrup & HBH in Mason jar
4. Protein patty
5. Spray bottle with sugar water & HBH



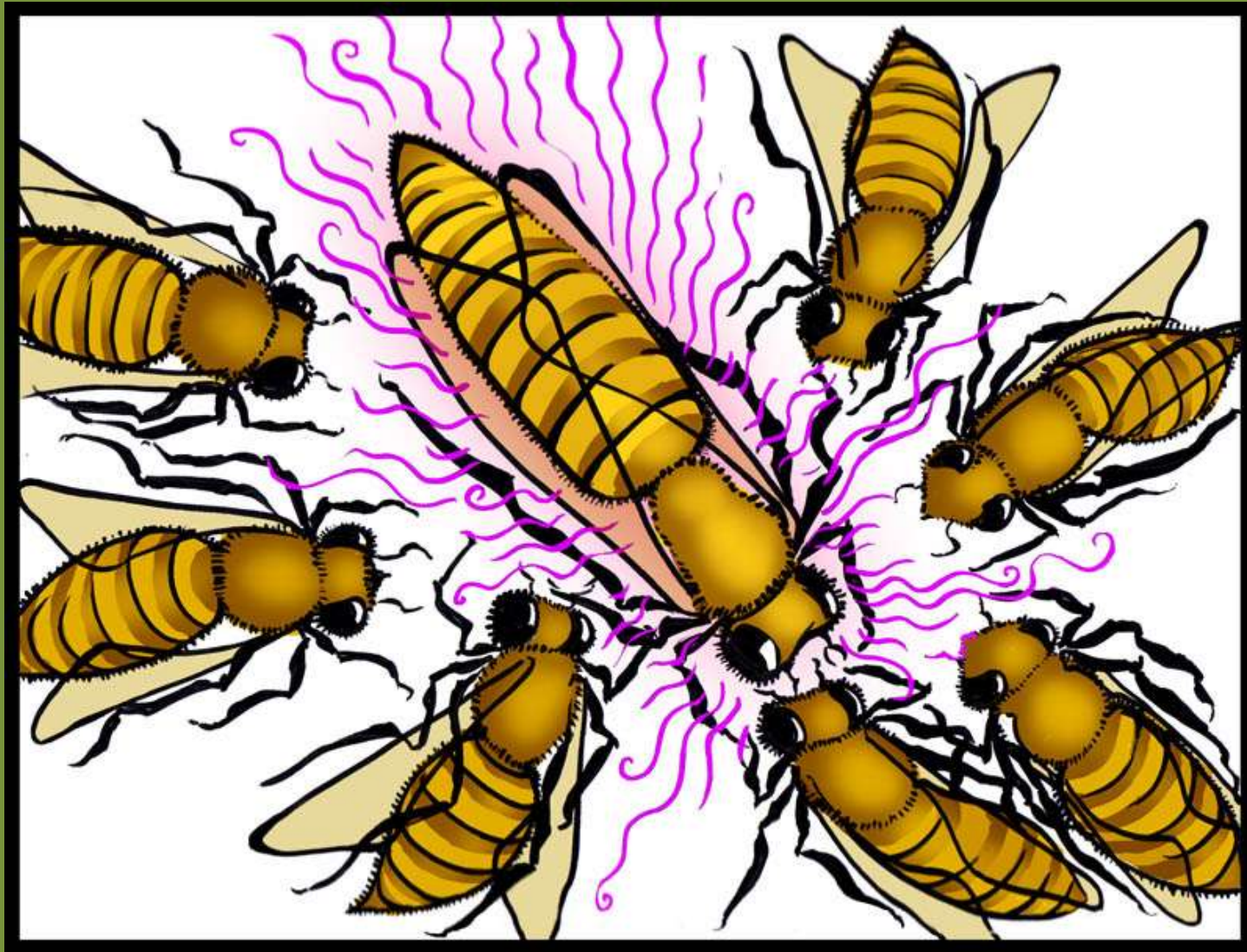
Hey, this
could be
better than
swarming

Know Nucs



- Why make nucs?
- When is the best time to make a nuc?
- What preparation is needed?
- **How is a nuc made?**
- What about care and feeding?
- Success?

1. Find the old queen and set her aside





- Starting on one side inspect frames sequentially
- As inspect frames, hold them over the brood box
- Lean inspected frame against brood box or put in an empty brood box



- As you remove each brood frame, look for quick movement on adjacent frame (queen runs from light)
- Place the queen with the frame she is walking on into an empty 5 frame nuc box

Last resort brush bees over a box with a queen excluder



- the workers will go below into the box while the queen and drones remain on the excluder

Finding the queen by looking at the big picture



2. Place nuc close to parent hive



3. Block entrance to nuc with screen



Numbered frame positions in nuc box



4. Add frames to nuc

#1 position: ONE frame of honey and pollen on one side of nuc



Don't forget to spray

#2 position: FIRST frame of mostly capped and emerging brood in the nuc

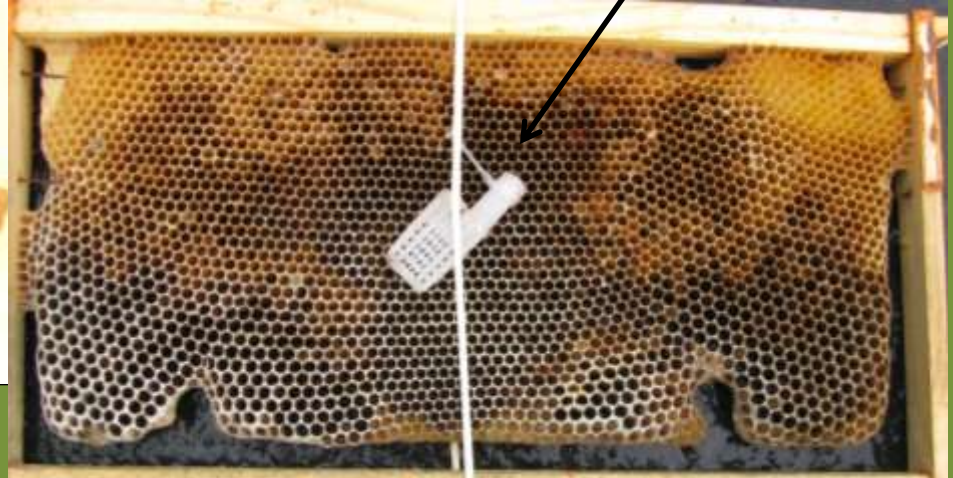


#3 position: SECOND brood frame with some open brood cells and with caged queen or queen cell

Wrong



Right

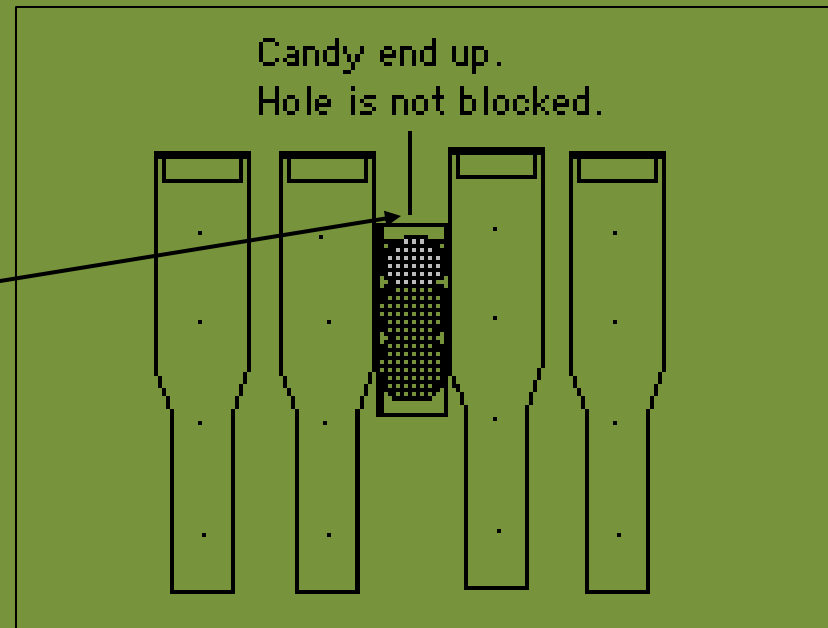


Cover exposed candy end with
tape



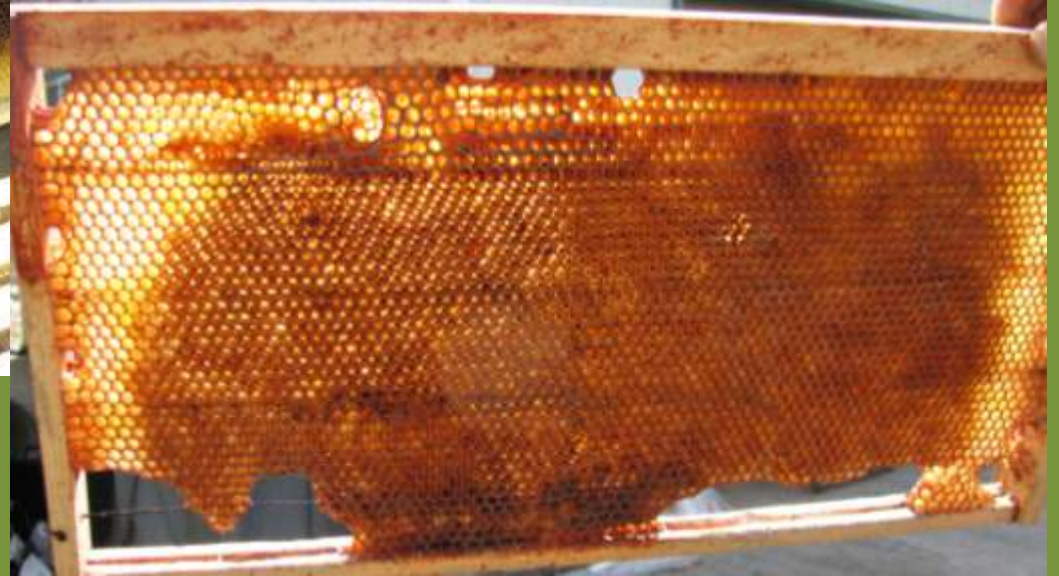
Cage Placement:

Candy Side Up



Screened Side
Exposed

#4 position: Empty drawn frame or brood frame



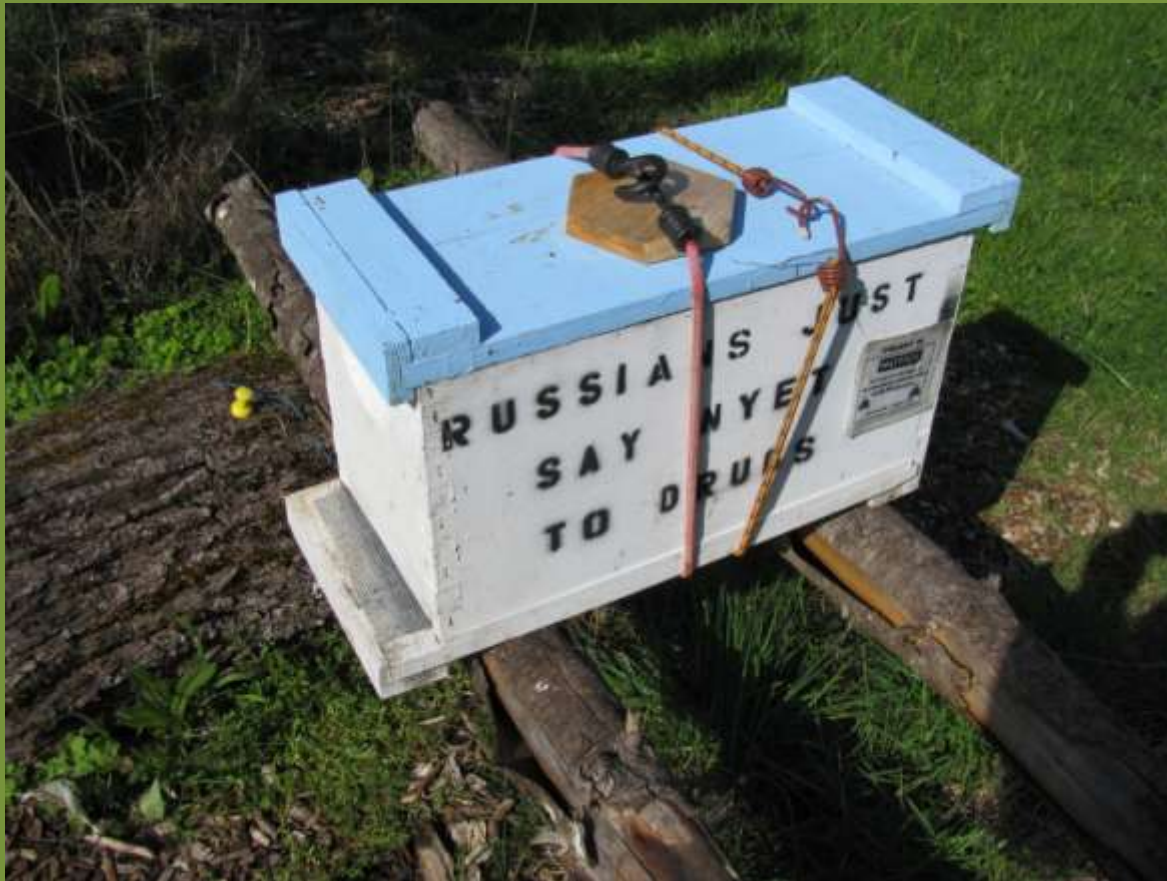
#5 position: Another honey/pollen frame



Numbered frame positions in nuc box



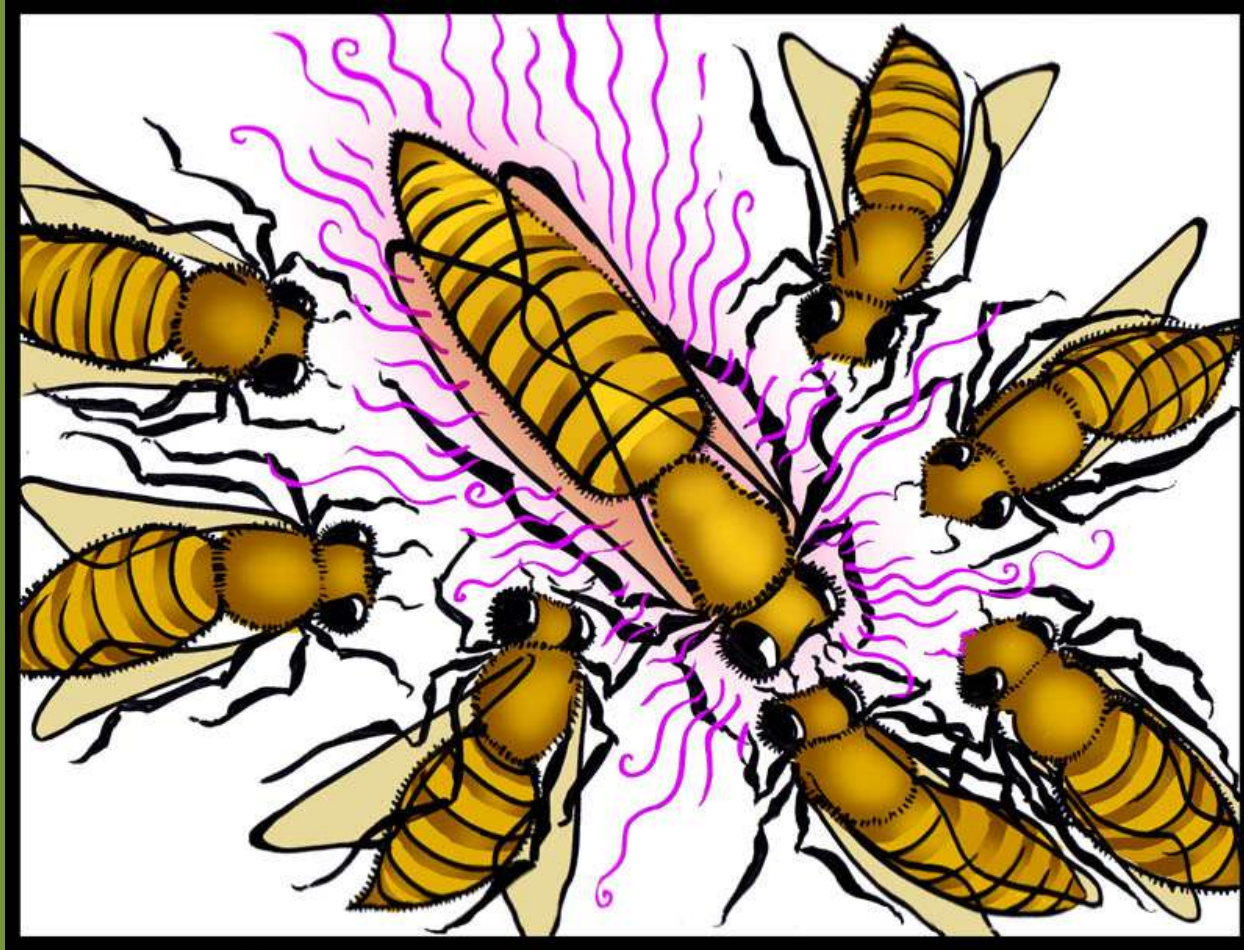
Remember the 3 feet or 3 mile rule if
you move your nuc



5. If you leave the nuc in the same yard, ADD extra bees to the nuc



6. Don't forget to put old queen back in donor hive!



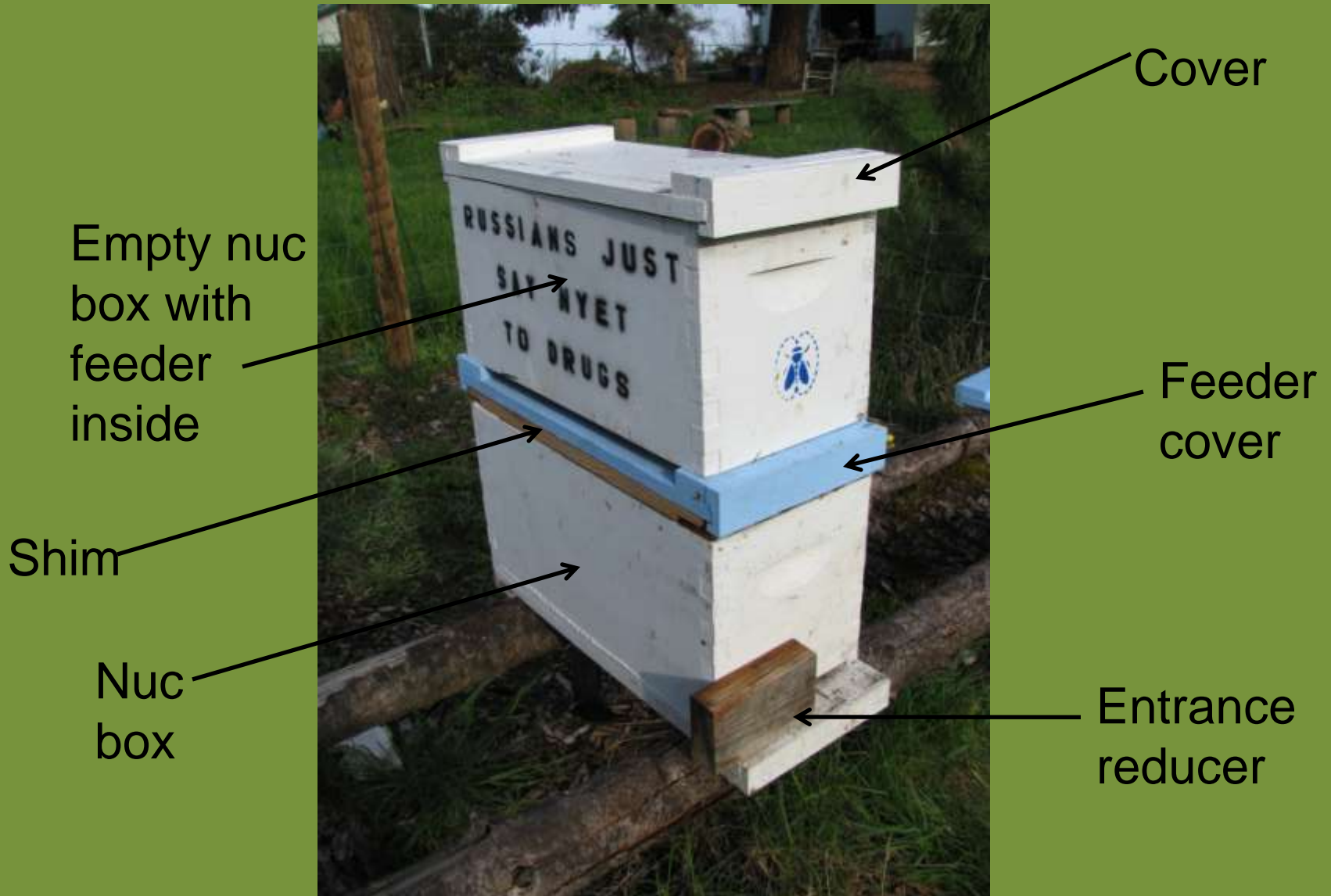
7. Add a protein patty and place shim over nuc



8. Place feeding cover over shim and add syrup and HBH and replace screen with entrance reducer



Completed Nuc

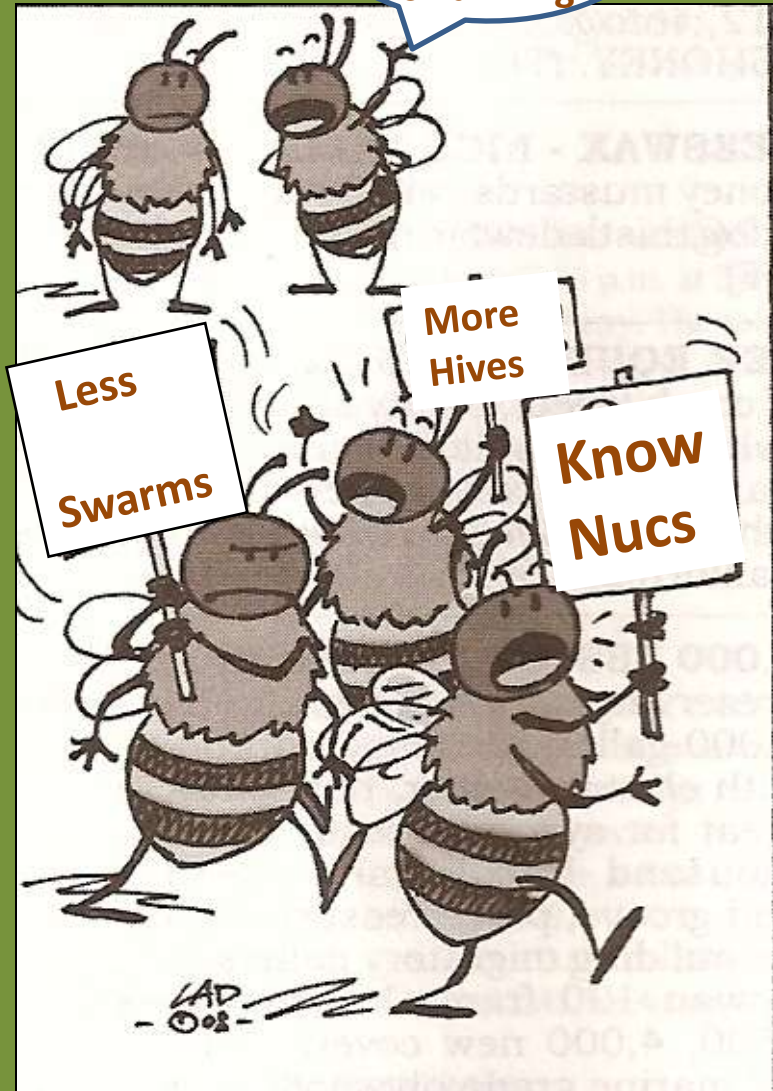


Ant Control: Use ground Cinnamon liberally



Hey, this
could be
better than
swarming

Know Nucs



- Why make nucs?
- When is the best time to make a nuc?
- What preparation is needed?
- How is a nuc made?
- What about care and feeding?
- Success?

Don't leave them searching for a stimulating meal!

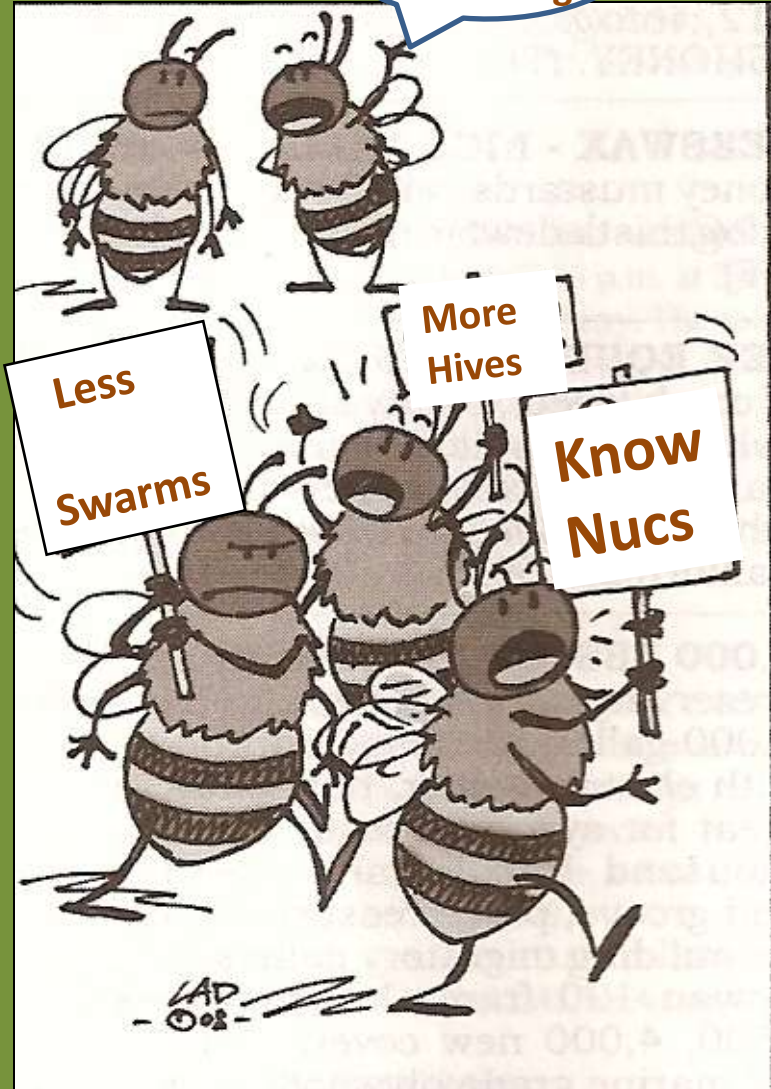


Nuc Calendar

[illegible]

Hey, this
could be
better than
swarming

Know Nucs



- Why make nucs?
- When is the best time to make a nuc?
- What preparation is needed?
- How is a nuc made?
- What about care and feeding?
- Success?

Nuc Calendar using Mated Queens



All dates are flexible EXCEPT for day 5

Day 5: If you find emergency queen cells,
CUT them out



This is what you see on day 5. How can this happen?



Day 5: If the bees are balling the cage, do not remove the cover over candy plug



Day 8: Safety Net

Nuc Calendar using Mated Queens

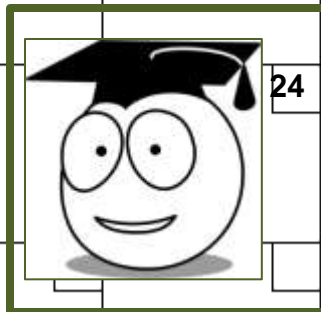
[illegible]

All dates are flexible EXCEPT for day 5

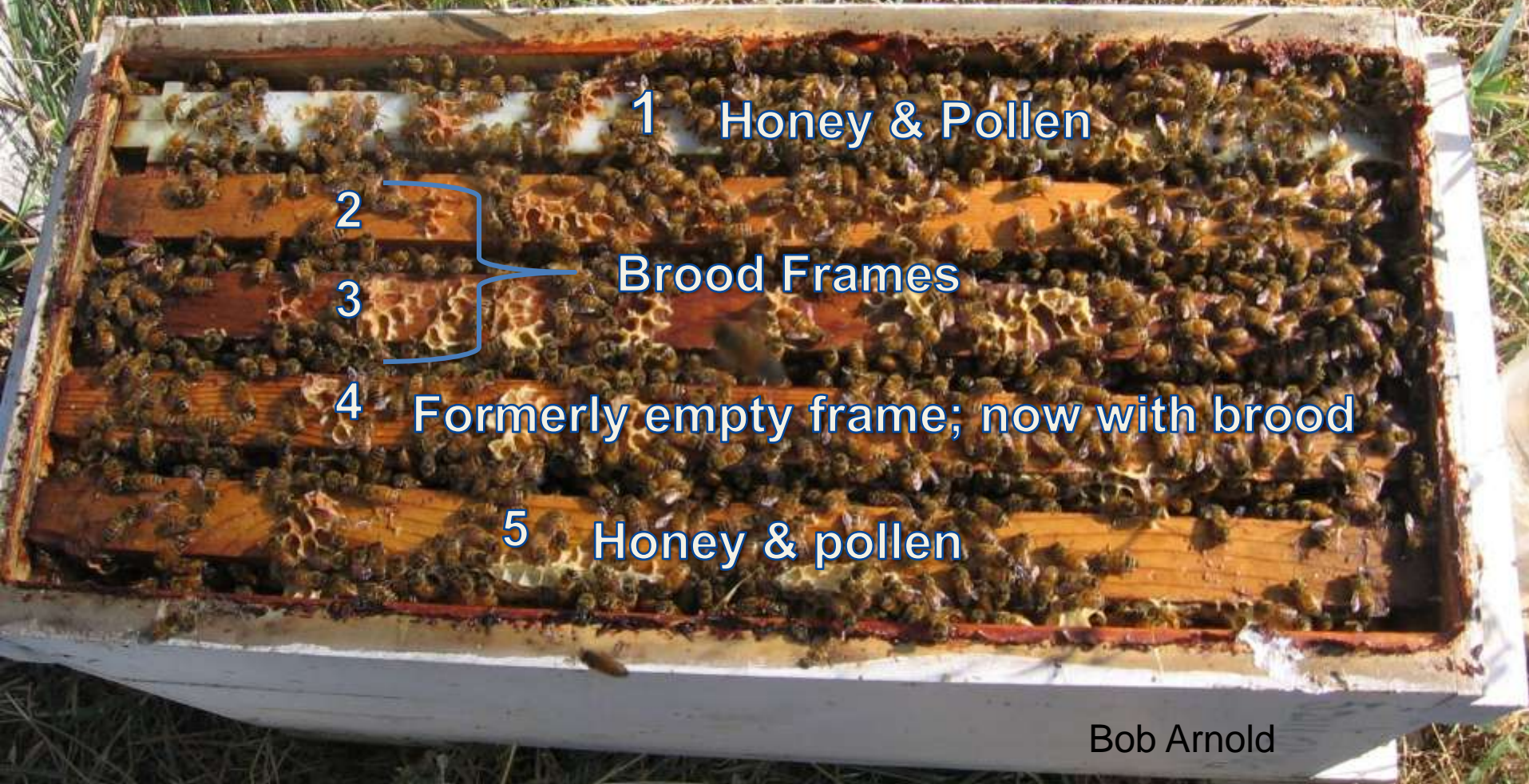
Day 24: Graduation Day

Nuc Calendar using Mated Queens

Make division; add caged queen	0									If NO queen cells or eggs, uncover candy	5		
Feed continuously for first 2 weeks													
			8										
Re-check for queen cells if needed			Feed continuously for first 2 weeks										



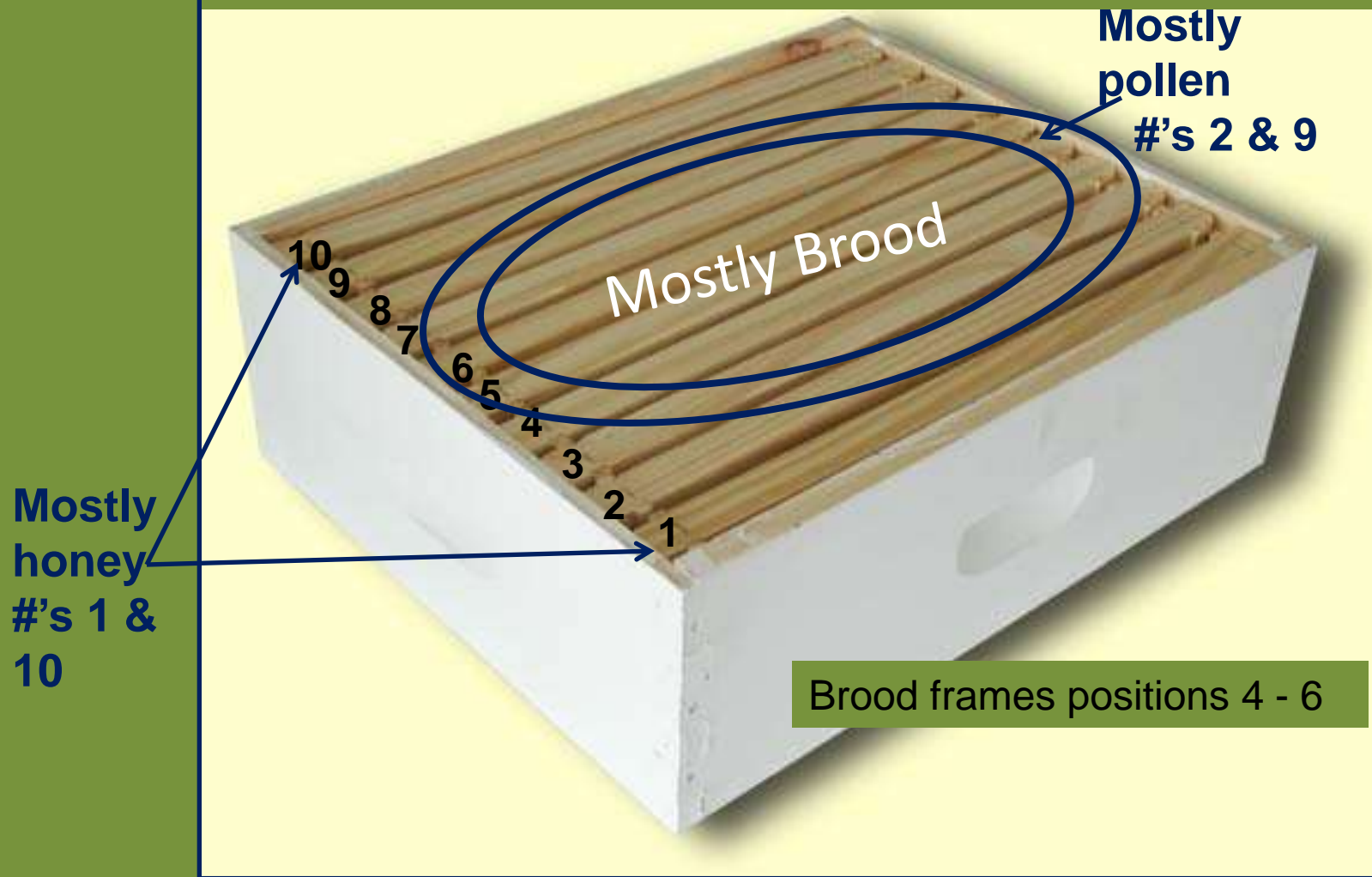
Ready to graduate



Day 24: graduate to a standard box



Frames are in numbered locations



Summary

- Controls swarming, increases numbers
- Late spring or early summer
- Gather materials and order queen
- Assemble nuc
- Feed, feed, feed
- Graduation

Knowing Nucs



The End



Photo: Roger Ledbetter

Questions?



(c) Kathy Keatley Garvey